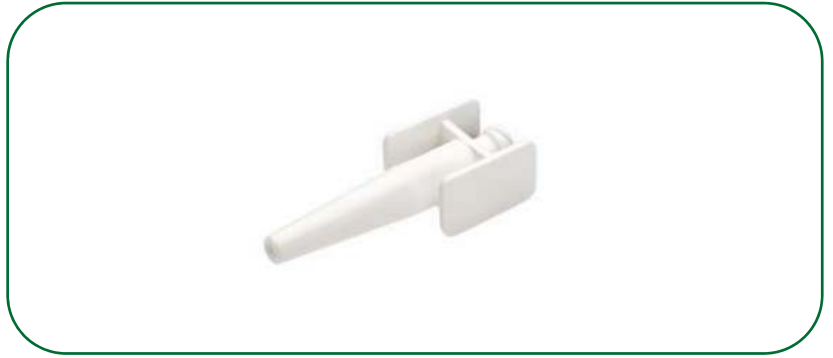


PRODUCT NO.: 7908



## Adapter, Luer Lock to Urethral Tip, Sterile

**Description:** Adapter with a luer lock connection on one end and a urethral catheter tip adapter on the other. Connects to syringe to adapt it to catheter use.

### Features:

- Made of polypropylene
- Individually wrapped

USA | Canada | Australia | International

[medisca.com](http://medisca.com)